

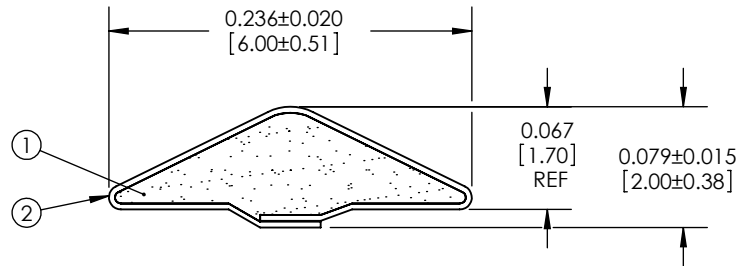
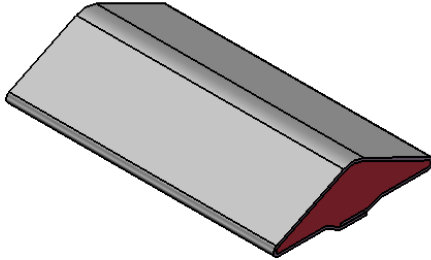


Revisions

Level		Date	By
○	RELEASE	3/9/09	PING
Ⓐ	UPDATE SHEET FORMAT	3/12/09	BEP
Ⓑ			
Ⓒ			

ROCHESTER DIVISION PRODUCT PRINT

The information disclosed in this drawing is confidential and the property of Schlegel Electronic Materials, INC. The use, disclosure, or reproduction of this information and related know-how is prohibited without written permission from Schlegel Electronic Materials, INC.



TOLERANCES

Profile thickness: ± 0.015 " (0.38mm)
 Profile width: ± 0.020 " (0.51mm)

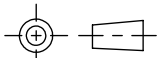
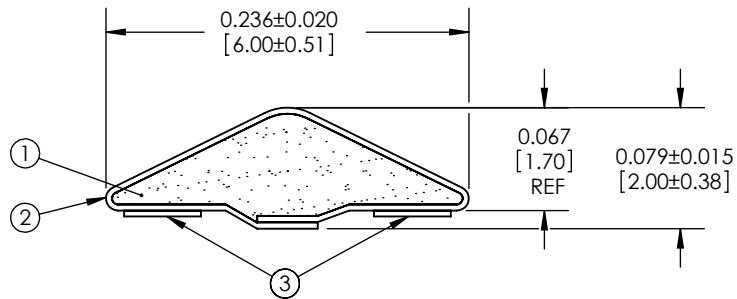
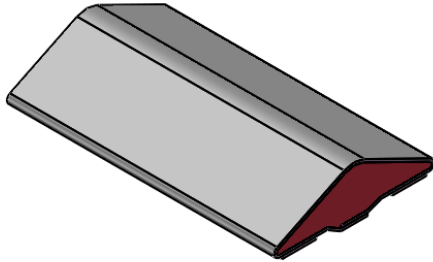
SCALE 1:1

PDR NO.:	④		
QUOTE NO.:	③		
CUSTOMER NAME:	②	SEE B.O.M.	CONDUCTIVE FABRIC
CUST DWG NO.:	①	SEE B.O.M.	URETHANE FOAM
SIZE A	Date	3/9/2009	
SHEET 1 OF 3		Item No.	RM Number
SCALE: 8:1		Approved By	Material Description
Cad File No. CC86051A		Part No. EK9xx-xxxxx	Drawn By PING
		Dwg. No. CC3E8605	Title 2mm x 6mm D-SHAPE EMI
			Rev. A

Level		Date	By
○	RELEASE	3/9/09	PING
Ⓐ	UPDATE SHEET FORMAT	3/12/09	BEP
Ⓑ			
Ⓒ			

ROCHESTER DIVISION PRODUCT PRINT

The information disclosed in this drawing is confidential and the property of Schlegel Electronic Materials, INC. The use, disclosure, or reproduction of this information and related know-how is prohibited without written permission from Schlegel Electronic Materials, INC.



TOLERANCES

Profile thickness: ± 0.015 " (0.38mm)
 Profile width: ± 0.020 " (0.51mm)



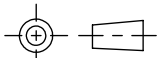
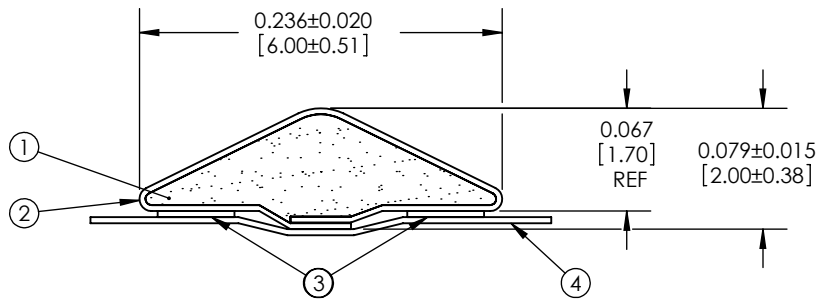
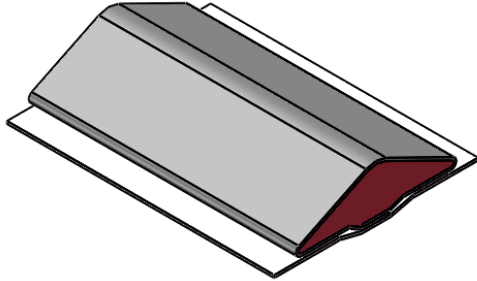
SCALE 1:1

PDR NO.:	④		
QUOTE NO.:	③	SEE B.O.M.	PSA .050" WIDE (UNLESS OTHERWISE SPECIFIED)
CUSTOMER NAME:	②	SEE B.O.M.	CONDUCTIVE FABRIC
CUST DWG NO.:	①	SEE B.O.M.	URETHANE FOAM
SIZE	Date	3/9/2009	
A	SHEET 2 OF 3		Item No. RM Number Material Description
SCALE: 8:1	Approved By	Drawn By PING	Title 2mm x 6mm D-SHAPE EMI
Cad File No. CC86051A	Part No. EK9xx2Xxxxx	Dwg. No. CC3E8605	Rev. A

Level		Date	By
○	RELEASE	3/9/09	PING
Ⓐ	UPDATE SHEET FORMAT	3/12/09	BEP
Ⓑ			
Ⓒ			

ROCHESTER DIVISION PRODUCT PRINT

The information disclosed in this drawing is confidential and the property of Schlegel Electronic Materials, INC. The use, disclosure, or reproduction of this information and related know-how is prohibited without written permission from Schlegel Electronic Materials, INC.



TOLERANCES

Profile thickness: ±.015" (0.38mm)
Profile width: ±.020" (0.51mm)



SCALE 1:1

PDR NO.:	④	SEE B.O.M.	RELEASE LINER .300" WIDE (UNLESS OTHERWISE SPECIFIED)
QUOTE NO.:	③	SEE B.O.M.	PSA .050" WIDE (UNLESS OTHERWISE SPECIFIED)
CUSTOMER NAME:	②	SEE B.O.M.	CONDUCTIVE FABRIC
CUST DWG NO.:	①	SEE B.O.M.	URETHANE FOAM
SIZE	Date	3/9/2009	
A	SHEET 3 OF 3		Item No. RM Number Material Description
SCALE: 8:1	Approved By	Drawn By PING	Title 2mm x 6mm D-SHAPE EMI
Cad File No. CC86051A	Part No. EK9xx2Zxxxx	Dwg. No. CC3E8605	Rev. A