

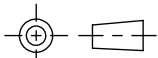
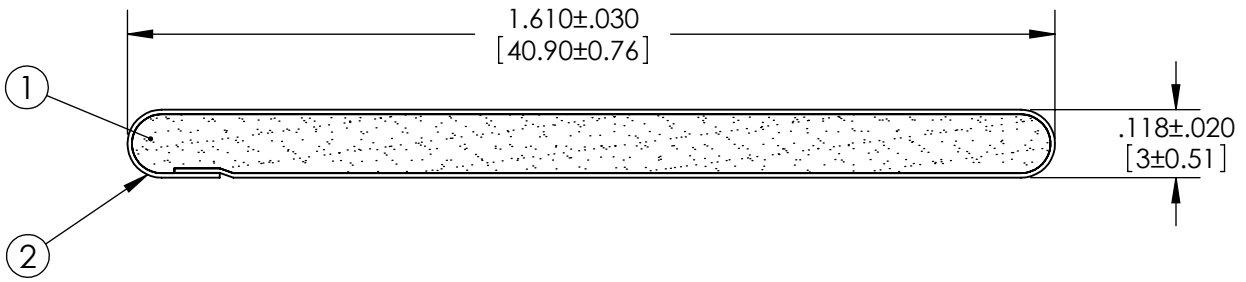
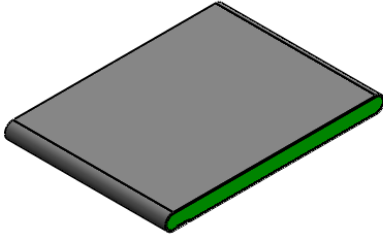


Revisions

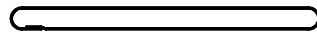
Level		Date	By
(A)	ADDED SHEET 3	6/25/01	EL
(B)	REV TO SOLIDWORKS	10/27/09	BEP
(C)			
(D)			

ROCHESTER DIVISION PRODUCT PRINT

The information disclosed in this drawing is confidential and the property of Schlegel Electronic Materials, INC. The use, disclosure, or reproduction of this information and related know-how is prohibited without written permission from Schlegel Electronic Materials, INC.



TOLERANCES
 Profile thickness: $\pm .020$ " (0.51mm)
 Profile width: $\pm .030$ " (0.76mm)



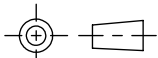
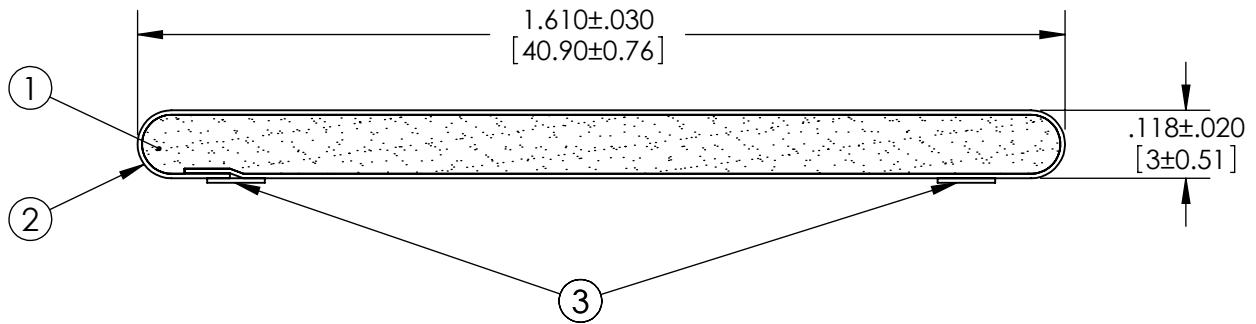
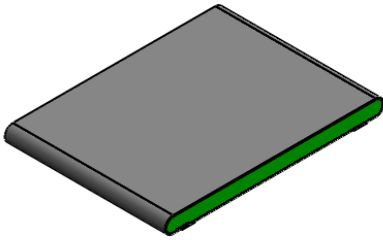
SCALE 1:1

PDR NO.:	(4)		
QUOTE NO.:	(3)		
CUSTOMER NAME:	(2)	SEE B.O.M.	CONDUCTIVE FABRIC
CUST DWG NO.:	(1)	SEE B.O.M.	URETHANE FOAM
SIZE A	Date	10/27/2009	
SHEET 1 OF 3		Item No.	RM Number
SCALE: 3:1		Approved By	Drawn By EJL
Title		3mm x 40.9mm EMI	
Cad File No.	UP25591B	Part No.	EC6xxXxxxxx
Dwg. No.	UP3E2559	Rev.	B

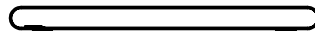
Level		Date	By
(A)	ADDED SHEET 3	6/25/01	EL
(B)	REV TO SOLIDWORKS	10/27/09	BEP
(C)			
(D)			

ROCHESTER DIVISION PRODUCT PRINT

The information disclosed in this drawing is confidential and the property of Schlegel Electronic Materials, INC. The use, disclosure, or reproduction of this information and related know-how is prohibited without written permission from Schlegel Electronic Materials, INC.



TOLERANCES
 Profile thickness: $\pm .020$ " (0.51mm)
 Profile width: $\pm .030$ " (0.76mm)



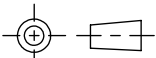
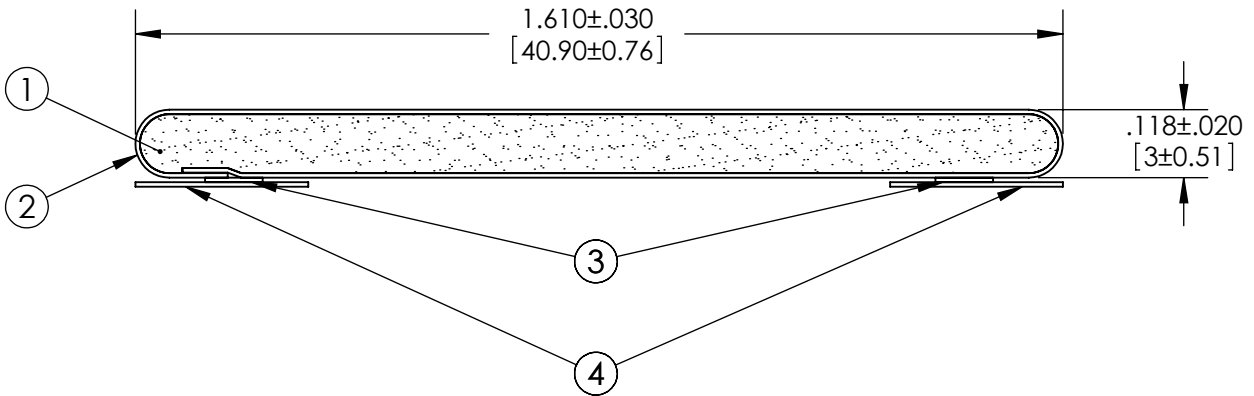
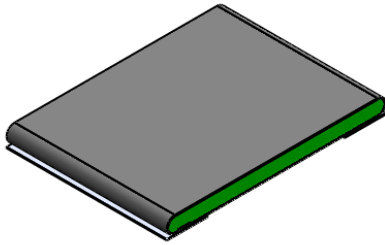
SCALE 1:1

PDR NO.:	(4)		
QUOTE NO.:	(3)	SEE B.O.M.	PSA .100" WIDE (UNLESS OTHERWISE SPECIFIED)
CUSTOMER NAME:	(2)	SEE B.O.M.	CONDUCTIVE FABRIC
CUST DWG NO.:	(1)	SEE B.O.M.	URETHANE FOAM
SIZE A	Date	10/27/2009	
SHEET 2 OF 3		Item No.	Material Description
SCALE: 3:1	Approved By	Drawn By: EJL	Title: 3mm x 40.9mm EMI
Cad File No. UP25591B	Part No. EC6xxTxxxxx	Dwg. No. UP3E2559	Rev. B

Level		Date	By
(A)	ADDED SHEET 3	6/25/01	EL
(B)	REV TO SOLIDWORKS	10/27/09	BEP
(C)			
(D)			

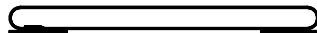
ROCHESTER DIVISION PRODUCT PRINT

The information disclosed in this drawing is confidential and the property of Schlegel Electronic Materials, INC. The use, disclosure, or reproduction of this information and related know-how is prohibited without written permission from Schlegel Electronic Materials, INC.



TOLERANCES

Profile thickness: $\pm .020$ " (0.51mm)
 Profile width: $\pm .030$ " (0.76mm)



SCALE 1:1

PDR NO.:	(4)	SEE B.O.M.	RELEASE LINER .300" WIDE (UNLESS OTHERWISE SPECIFIED)
QUOTE NO.:	(3)	SEE B.O.M.	PSA .100" WIDE (UNLESS OTHERWISE SPECIFIED)
CUSTOMER NAME:	(2)	SEE B.O.M.	CONDUCTIVE FABRIC
CUST DWG NO.:	(1)	SEE B.O.M.	URETHANE FOAM
SIZE A	Date	10/27/2009	
SHEET 3 OF 3		Item No.	Material Description
SCALE: 3:1	Approved By	Drawn By EJL	Title 3mm x 40.9mm EMI
Cad File No. UP25591B	Part No. EC6xxZxxxxx	Dwg. No. UP3E2559	Rev. B