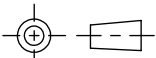
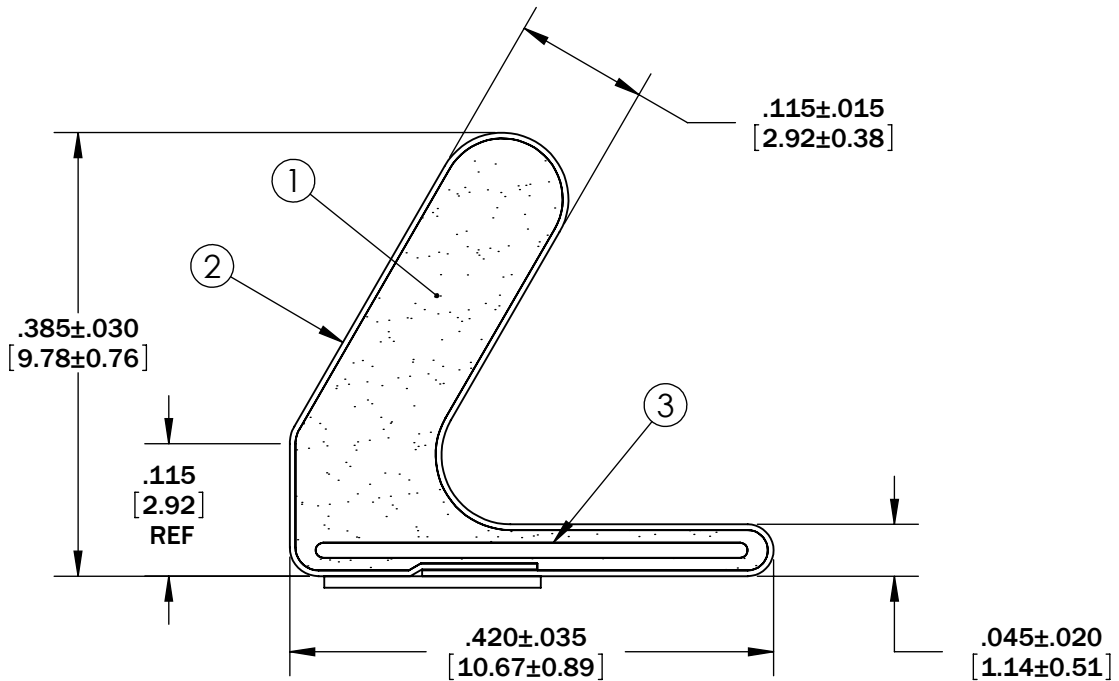
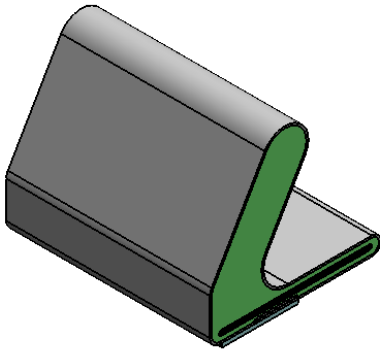


Level		Date	By
(D)	REV PER ECO 2056	9/21/98	EJL
(E)	REV FORM	4/16/99	EJL
(F)	UPDATE SHEET FORMAT	5/7/09	BEP
(G)			

ROCHESTER DIVISION PRODUCT PRINT

The information disclosed in this drawing is confidential and the property of Schlegel Electronic Materials, INC. The use, disclosure, or reproduction of this information and related know-how is prohibited without written permission from Schlegel Electronic Materials, INC.



TOLERANCES  
 Profile thickness: ±.030" (0.76mm)  
 Profile width: ±.035" (0.89mm)



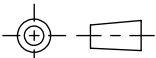
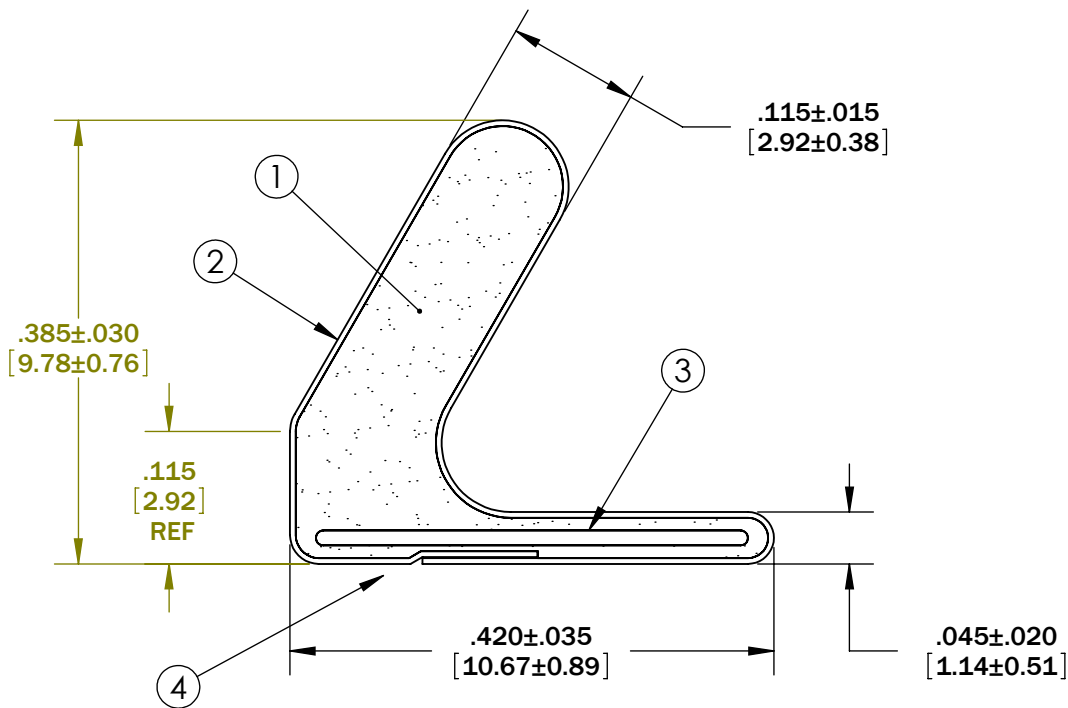
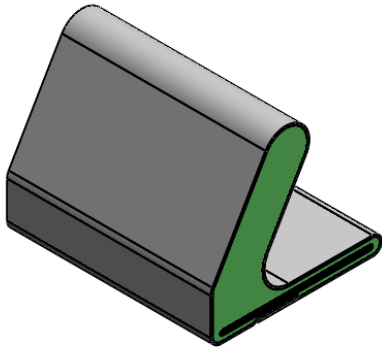
SCALE 1:1

PDR NO.:	(4)		
QUOTE NO.:	(3)	SEE B.O.M.	PLASTIC INSERT .375" WIDE
CUSTOMER NAME:	(2)	SEE B.O.M.	CONDUCTIVE FABRIC
CUST DWG NO.:	(1)	SEE B.O.M.	URETHANE FOAM
DATE	7/17/1989		
SIZE	A		
SHEET 1 OF 2		Item No.	Material Description
SCALE: 6:1	Approved By	Drawn By EJL	Title 9.8mm x 10.7mm C-FOLD EMI
Cad File No. UP04351F	Part No. E98xxXxxxxx	Dwg. No. UP3E0435	Rev. F

Level		Date	By
(D)	REV PER ECO 2056	9/21/98	EJL
(E)	REV FORM	4/16/99	EJL
(F)	UPDATE SHEET FORMAT	5/7/09	BEP
(G)			

ROCHESTER DIVISION PRODUCT PRINT

The information disclosed in this drawing is confidential and the property of Schlegel Electronic Materials, INC. The use, disclosure, or reproduction of this information and related know-how is prohibited without written permission from Schlegel Electronic Materials, INC.



TOLERANCES

Profile thickness:  $\pm .030$ " (0.76mm)  
 Profile width:  $\pm .035$ " (0.89mm)



SCALE 1:1

PDR NO.:	(4)	SEE B.O.M.	PSA .188" WIDE (UNLESS OTHERWISE SPECIFIED)
QUOTE NO.:	(3)	SEE B.O.M.	PLASTIC INSERT .375" WIDE
CUSTOMER NAME:	(2)	SEE B.O.M.	CONDUCTIVE FABRIC
CUST DWG NO.:	(1)	SEE B.O.M.	URETHANE FOAM
SIZE A	Date	7/17/1989	
SHEET 2 OF 2		Item No.	Material Description
SCALE: 6:1	Approved By	Drawn By EJL	Title 9.8mm x 10.7mm C-FOLD EMI
Cad File No. UP04351F	Part No. E98xxTxxxxx	Dwg. No. UP3E0435	Rev. F