

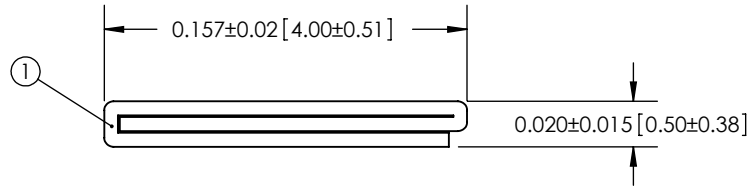
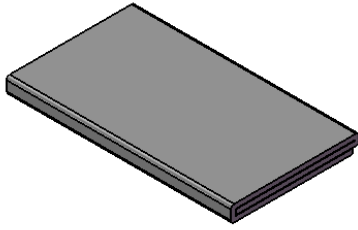


Revisions

Level		Date	By
○	RELEASE	7/30/97	JCR
Ⓐ	UPDATE SHEET FORMAT	3/2/09	BEP
Ⓑ			
Ⓒ			

ROCHESTER DIVISION PRODUCT PRINT

The information disclosed in this drawing is confidential and the property of Schlegel Electronic Materials, INC. The use, disclosure, or reproduction of this information and related know-how is prohibited without written permission from Schlegel Electronic Materials, INC.



TOLERANCES

Profile thickness: ± 0.015 " (0.38mm)
 Profile width: ± 0.020 " (0.50mm)
 Length: 1.00"-6.00" = ± 0.030 " (0.76mm)
 6.00"-12.00" = ± 0.040 " (1.0mm)
 Hole diameter: .062"-.500" = ± 0.010 " (0.25mm)
 .501"-1.00" = ± 0.015 " (0.38mm)
 Die cut edge to feature : .062"-.500" = ± 0.015 " (0.38mm)
 .501"-1.00" = ± 0.030 " (0.76mm)

SCALE 1:1

CURRENT CONFIGURATIONS	
PROFILE	DESCRIPTION
E8313	NiCu C70 FABRIC
E8314	NiCu C12 FABRIC
E8319	Ag C2 FABRIC
E8373	SOFT FOAM, NiCu C70 FABRIC

NOTE: Other configurations may be available at special minimum order quantities.

PDR NO.:			
QUOTE NO.:	③		
CUSTOMER NAME:	②		
CUST DWG NO.:	①	SEE B.O.M.	CONDUCTIVE FABRIC
SIZE	Date 7/30/1997	Item No.	RM Number
A	SHEET 1 OF 3		Material Description
SCALE: 12:1	Approved By	Drawn By JCR	Title 0.5mm x 4.0mm EMI GASKET
Cad File No. DC47781A	Part No. E83xxXxxxxx	Dwg. No. DC3E4778	Rev. A

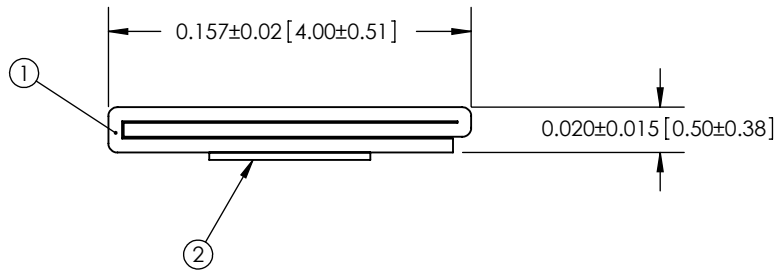
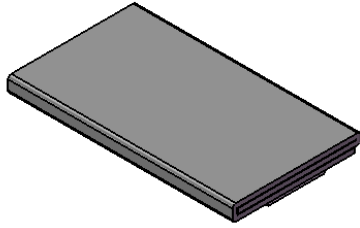


Revisions

Level		Date	By
(A)	RELEASE	7/30/97	JCR
(B)	UPDATE SHEET FORMAT	3/2/09	BEP
(C)			
(D)			

ROCHESTER DIVISION PRODUCT PRINT

The information disclosed in this drawing is confidential and the property of Schlegel Electronic Materials, INC. The use, disclosure, or reproduction of this information and related know-how is prohibited without written permission from Schlegel Electronic Materials, INC.



TOLERANCES

- Profile thickness: ± 0.015 " (0.38mm)
- Profile width: ± 0.020 " (0.50mm)
- Length: 1.00"-6.00" = ± 0.030 " (0.76mm)
- 6.00"-12.00" = ± 0.040 " (1.0mm)
- Hole diameter: .062"-.500" = ± 0.010 " (0.25mm)
- .501"-1.00" = ± 0.015 " (0.38mm)
- Die cut edge to feature : .062"-.500" = ± 0.015 " (0.38mm)
- .501"-1.00" = ± 0.030 " (0.76mm)

SCALE 1:1

CURRENT CONFIGURATIONS	
PROFILE	DESCRIPTION
E8313	NiCu C70 FABRIC
E8314	NiCu C12 FABRIC
E8319	Ag C2 FABRIC
E8373	SOFT FOAM, NiCu C70 FABRIC

NOTE: Other configurations may be available at special minimum order quantities.

PDR NO.:			
QUOTE NO.:	(3)		
CUSTOMER NAME:	(2)	SEE B.O.M.	PSA .070" WIDE (UNLESS OTHERWISE SPECIFIED)
CUST DWG NO.:	(1)	SEE B.O.M.	CONDUCTIVE FABRIC
SIZE A	Date 7/30/1997	Item No.	RM Number
SHEET 2 OF 3		Material Description	
SCALE: 12:1	Approved By	Drawn By JCR	Title 0.5mm x 4.0mm EMI GASKET
Cad File No. DC47781A	Part No. E83xxTxxxx	Dwg. No. DC3E4778	Rev. A

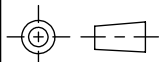
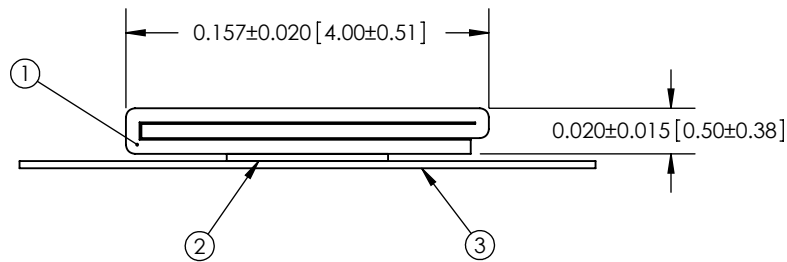
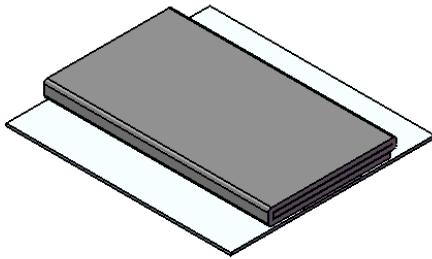


Revisions

Level		Date	By
○	RELEASE	7/30/97	JCR
Ⓐ	UPDATE SHEET FORMAT	3/2/09	BEP
Ⓑ			
Ⓒ			

ROCHESTER DIVISION PRODUCT PRINT

The information disclosed in this drawing is confidential and the property of Schlegel Electronic Materials, INC. The use, disclosure, or reproduction of this information and related know-how is prohibited without written permission from Schlegel Electronic Materials, INC.



TOLERANCES

- Profile thickness: ± 0.015 " (0.38mm)
- Profile width: ± 0.030 " (0.76mm)
- Length: 1.00"-6.00" = ± 0.030 " (0.76mm)
6.00"-12.00" = ± 0.040 " (1.0mm)
- Hole diameter: .062"-.500" = ± 0.010 " (0.25mm)
.501"-1.00" = ± 0.015 " (0.38mm)
- Die cut edge to feature : .062"-.500" = ± 0.015 " (0.38mm)
.501"-1.00" = ± 0.030 " (0.76mm)

SCALE 1:1

CURRENT CONFIGURATIONS	
PROFILE	DESCRIPTION
E8313	NiCu C70 FABRIC
E8314	NiCu C12 FABRIC
E8319	Ag C2 FABRIC
E8373	SOFT FOAM, NiCu C70 FABRIC
NOTE: Other configurations may be available at special minimum order quantities.	

PDR NO.:			
QUOTE NO.:	③	SEE B.O.M.	RELEASE LINER .250" WIDE (UNLESS OTHERWISE SPECIFIED)
CUSTOMER NAME:	②	SEE B.O.M.	PSA .070" WIDE (UNLESS OTHERWISE SPECIFIED)
CUST DWG NO.:	①	SEE B.O.M.	CONDUCTIVE FABRIC
SIZE	Date 7/30/1997	Item No.	Material Description
A	SHEET 3 OF 3	RM Number	
SCALE: 12:1	Approved By	Drawn By JCR	Title 0.5mm x 4.0mm EMI GASKET
Cad File No. DC47781A	Part No. E83xxZxxxx	Dwg. No. DC3E4778	Rev. A