

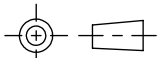
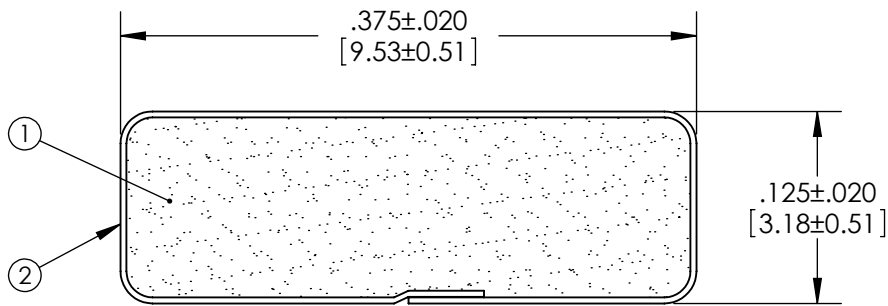
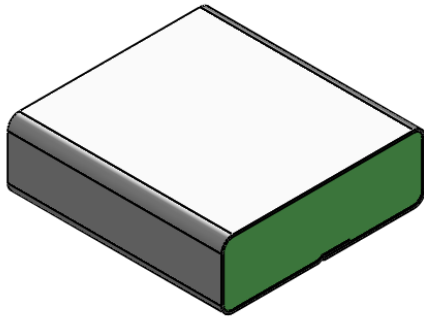


Revisions

Level		Date	By
(B)	REV PER ECO 2056	3/24/99	EL
(C)	REV PER ECO 2288	5/30/03	EL
(D)	REV SCALE ECO TN008	6/20/05	JED
(E)	REV TO SOLIDWORKS	3/8/10	BEP

ROCHESTER DIVISION PRODUCT PRINT

The information disclosed in this drawing is confidential and the property of Schlegel Electronic Materials, INC. The use, disclosure, or reproduction of this information and related know-how is prohibited without written permission from Schlegel Electronic Materials, INC.



TOLERANCES  
 Profile thickness:  $\pm.020$ " (0.51mm)  
 Profile width:  $\pm.020$ " (0.51mm)

  
 SCALE 1:1

PDR NO.:	(4)		
QUOTE NO.:	(3)		
CUSTOMER NAME:	(2)	SEE B.O.M.	CONDUCTIVE FOAM
CUST DWG NO.:	(1)	SEE B.O.M.	URETHANE FOAM
SIZE A	Date	12/14/1993	
SHEET 1 OF 3		Item No.	Material Description
SCALE: 10:1	Approved By	Drawn By EJL	Title 3.2mm x 9.5mm EMI
Cad File No. UP02871E	Part No. E62xxXxxxxx	Dwg. No. UP3E0287	Rev. E

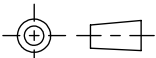
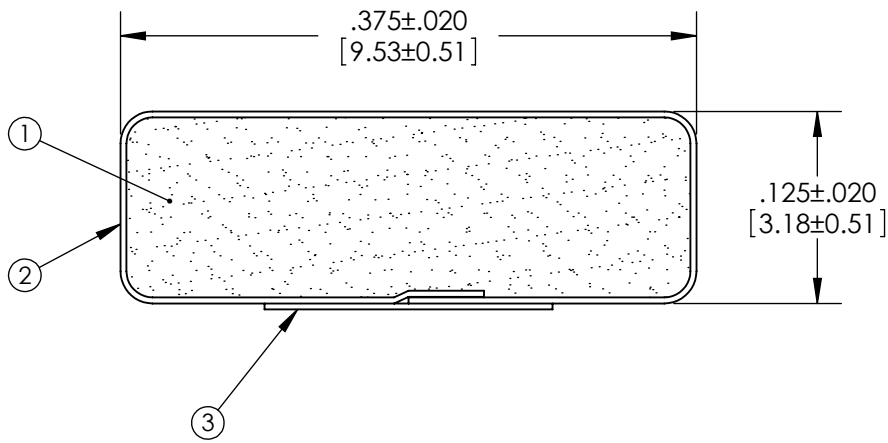
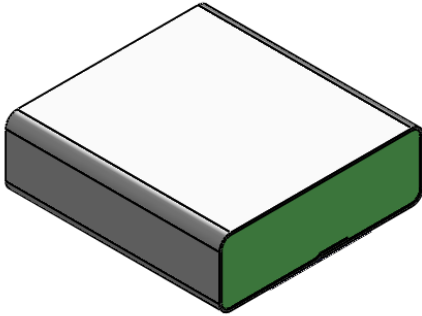


Revisions

Level		Date	By
(B)	REV PER ECO 2056	3/24/99	EL
(C)	REV PER ECO 2288	5/30/03	EL
(D)	REV SCALE ECO TN008	6/20/05	JED
(E)	REV TO SOLIDWORKS	3/8/10	BEP

ROCHESTER DIVISION PRODUCT PRINT

The information disclosed in this drawing is confidential and the property of Schlegel Electronic Materials, INC. The use, disclosure, or reproduction of this information and related know-how is prohibited without written permission from Schlegel Electronic Materials, INC.



TOLERANCES

Profile thickness:  $\pm .020$ " (0.51mm)  
 Profile width:  $\pm .020$ " (0.51mm)



PDR NO.:	(4)		
QUOTE NO.:	(3)	SEE B.O.M.	PSA .188" WIDE UNLESS OTHERWISE SPECIFIED
CUSTOMER NAME:	(2)	SEE B.O.M.	CONDUCTIVE FOAM
CUST DWG NO.:	(1)	SEE B.O.M.	URETHANE FOAM
SIZE	Date	12/14/1993	
<b>A</b>	SHEET 2 OF 3		Item No. RM Number Material Description
SCALE: 10:1	Approved By	Drawn By EJL	Title 3.2mm x 9.5mm EMI
Cad File No. UP02871E	Part No. E62xxxxxxx	Dwg. No. UP3E0287	Rev. E

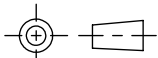
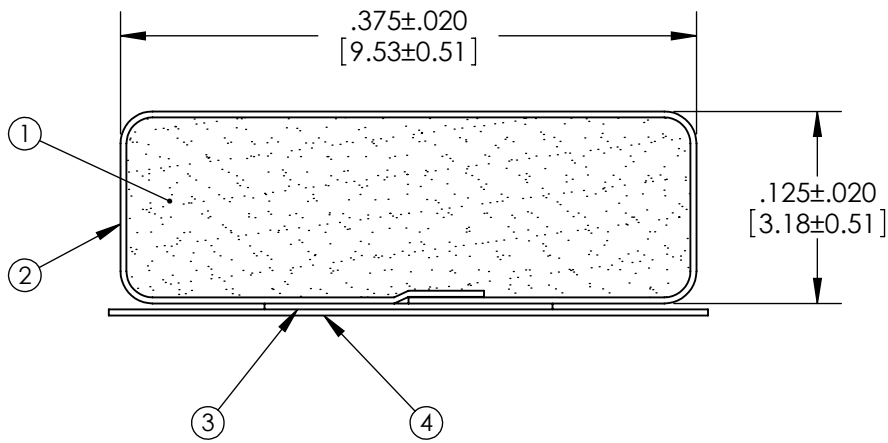
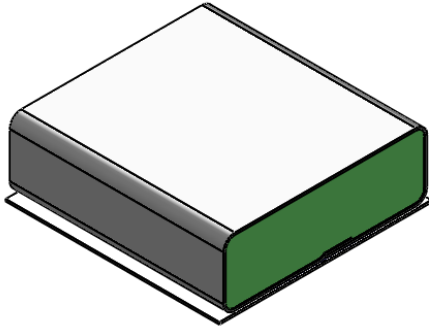


Revisions

Level		Date	By
(B)	REV PER ECO 2056	3/24/99	EL
(C)	REV PER ECO 2288	5/30/03	EL
(D)	REV SCALE ECO TN008	6/20/05	JED
(E)	REV TO SOLIDWORKS	3/8/10	BEP

ROCHESTER DIVISION PRODUCT PRINT

The information disclosed in this drawing is confidential and the property of Schlegel Electronic Materials, INC. The use, disclosure, or reproduction of this information and related know-how is prohibited without written permission from Schlegel Electronic Materials, INC.



TOLERANCES  
 Profile thickness:  $\pm.020$ " (0.51mm)  
 Profile width:  $\pm.020$ " (0.51mm)

  
 SCALE 1:1

PDR NO.:	(4)	SEE B.O.M.	RELEASE LINER .390" WIDE
QUOTE NO.:	(3)	SEE B.O.M.	PSA .188" WIDE UNLESS OTHERWISE SPECIFIED
CUSTOMER NAME:	(2)	SEE B.O.M.	CONDUCTIVE FOAM
CUST DWG NO.:	(1)	SEE B.O.M.	URETHANE FOAM
SIZE A	Date	12/14/1993	
SHEET 3 OF 3		Item No.	Material Description
SCALE: 10:1	Approved By	Drawn By EJL	Title 3.2mm x 9.5mm EMI
Cad File No. UP02871E	Part No. E62xxxxxxx	Dwg. No. UP3E0287	Rev. E