

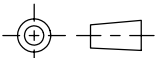
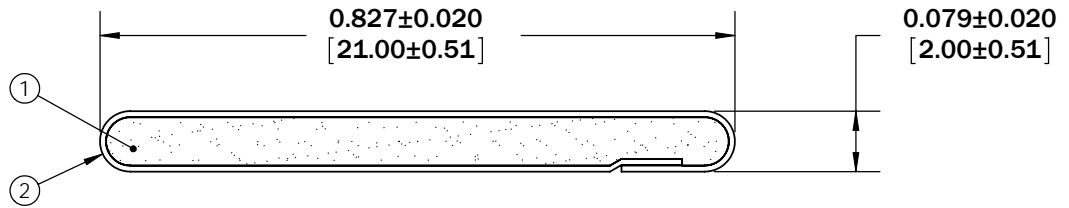
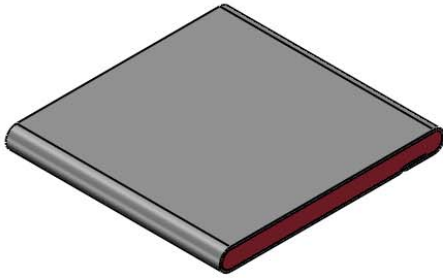


Revisions

Level		Date	By
Ⓒ	REV PER ECO 2056	12/11/98	EL
Ⓓ	ADDED SHEET 3	4/20/01	EL
Ⓔ	REV TO SOLIDWORKS	7/16/09	BEP
Ⓕ			

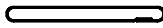
ROCHESTER DIVISION PRODUCT PRINT

The information disclosed in this drawing is confidential and the property of Schlegel Electronic Materials, INC. The use, disclosure, or reproduction of this information and related know-how is prohibited without written permission from Schlegel Electronic Materials, INC.



TOLERANCES

Profile thickness: ± 0.020 " (0.51mm)
 Profile width: ± 0.020 " (0.51mm)



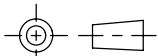
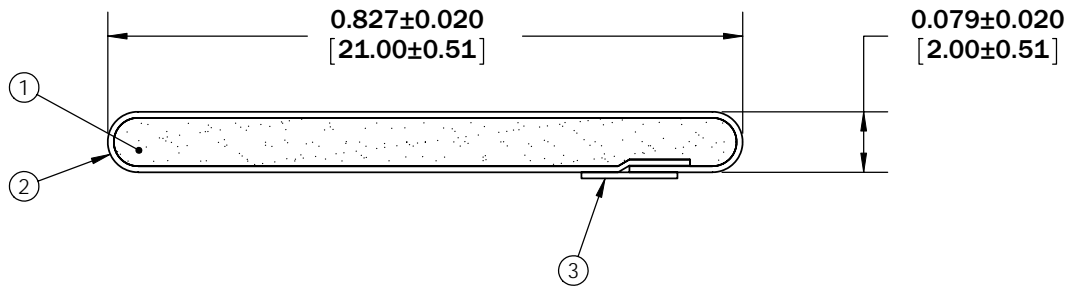
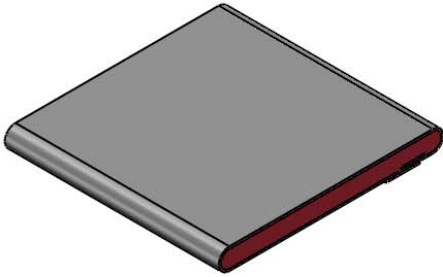
SCALE 1:1

PDR NO.:	④		
QUOTE NO.:	③		
CUSTOMER NAME:	②	SEE B.O.M.	CONDUCTIVE FABRIC
CUST DWG NO.:	①	SEE B.O.M.	URETHANE FOAM
SIZE A	Date	11/1/1989	
SHEET 1 OF 3		Item No.	RM Number
SCALE: 4:1		Approved By	Drawn By EJL
Title		2mm x 21mm EMI	
Cad File No.	UP04191E	Part No.	E58xxXxxxxx
Dwg. No.	UP3E0419	Rev.	E

Level		Date	By
Ⓒ	REV PER ECO 2056	12/11/98	EL
Ⓓ	ADDED SHEET 3	4/20/01	EL
Ⓔ	REV TO SOLIDWORKS	7/16/09	BEP
Ⓕ			

ROCHESTER DIVISION PRODUCT PRINT

The information disclosed in this drawing is confidential and the property of Schlegel Electronic Materials, INC. The use, disclosure, or reproduction of this information and related know-how is prohibited without written permission from Schlegel Electronic Materials, INC.



TOLERANCES

Profile thickness: ± 0.020 " (0.51mm)
 Profile width: ± 0.020 " (0.51mm)



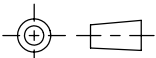
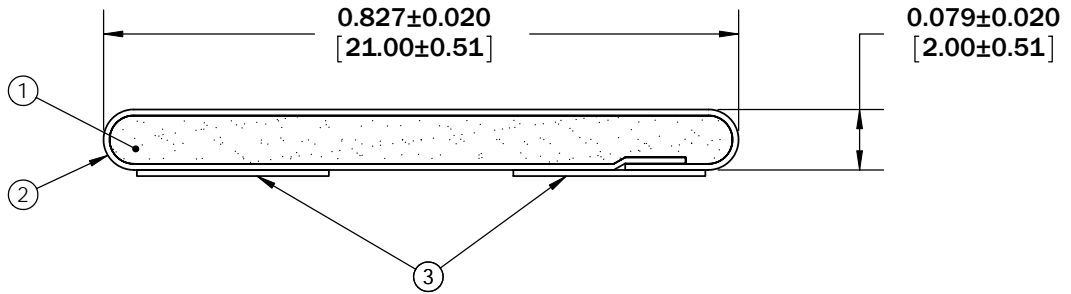
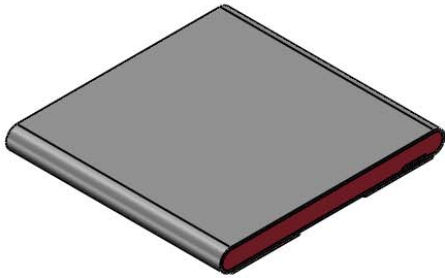
SCALE 1:1

PDR NO.:	④		
QUOTE NO.:	③	SEE B.O.M.	PSA .125" WIDE (UNLESS OTHERWISE SPECIFIED)
CUSTOMER NAME:	②	SEE B.O.M.	CONDUCTIVE FABRIC
CUST DWG NO.:	①	SEE B.O.M.	URETHANE FOAM
SIZE A	Date	11/1/1989	
SHEET 2 OF 3		Item No.	Material Description
SCALE: 4:1	Approved By	Drawn By EJL	Title 2mm x 21mm EMI
Cad File No. UP04191E	Part No. E58xxTxxxxx	Dwg. No. UP3E0419	Rev. E

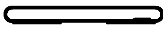
Revisions			
Level		Date	By
Ⓒ	REV PER ECO 2056	12/11/98	EL
Ⓓ	ADDED SHEET 3	4/20/01	EL
Ⓔ	REV TO SOLIDWORKS	7/16/09	BEP
Ⓕ			

ROCHESTER DIVISION PRODUCT PRINT

The information disclosed in this drawing is confidential and the property of Schlegel Electronic Materials, INC. The use, disclosure, or reproduction of this information and related know-how is prohibited without written permission from Schlegel Electronic Materials, INC.



TOLERANCES
 Profile thickness: ± 0.020 " (0.51mm)
 Profile width: ± 0.020 " (0.51mm)



SCALE 1:1

PDR NO.:	④		
QUOTE NO.:	③	SEE B.O.M.	PSA .250" WIDE (UNLESS OTHERWISE SPECIFIED)
CUSTOMER NAME:	②	SEE B.O.M.	CONDUCTIVE FABRIC
CUST DWG NO.:	①	SEE B.O.M.	URETHANE FOAM
SIZE A	Date	11/1/1989	
SHEET 3 OF 3		Item No.	RM Number
SCALE: 4:1		Approved By	Drawn By EJL
Title		2mm x 21mm EMI	
Cad File No.	UP04191E	Part No.	E58xx2Txxxx
Dwg. No.	UP3E0419	Rev.	E