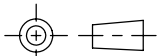
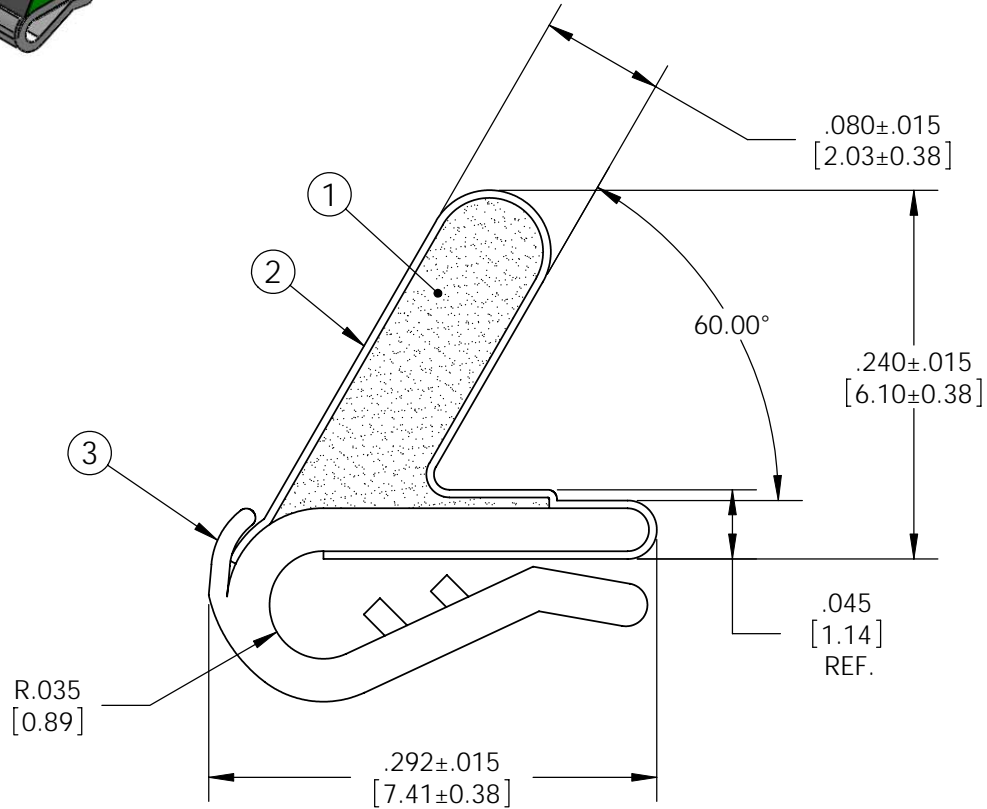
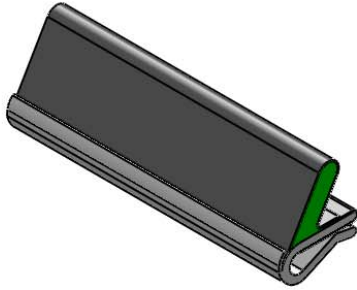


Level		Date	By
(A)	ADDED TOL.	12/14/99	EL
(B)	REV PER ECO 2288	6/17/03	EL
(C)	REV TO SOLIDWORKS	10/22/09	BEP
(D)			

ROCHESTER DIVISION PRODUCT PRINT

The information disclosed in this drawing is confidential and the property of Schlegel Electronic Materials, INC. The use, disclosure, or reproduction of this information and related know-how is prohibited without written permission from Schlegel Electronic Materials, INC.



TOLERANCES

Profile thickness: $\pm .015$ " (0.38mm)
 Profile width: $\pm .015$ " (0.38mm)



SCALE 1:1

PDR NO.:	(4)		
QUOTE NO.:	(3)	SEE B.O.M.	INSERT PC200908
CUSTOMER NAME:	(2)	SEE B.O.M.	CONDUCTIVE FABRIC
CUST DWG NO.:	(1)	SEE B.O.M.	URETHANE FOAM
SIZE A	Date	12/8/1999	
SHEET 1 OF 1		Item No.	Material Description
SCALE: 8:1	Approved By	Drawn By: EJL	Title: 6.1mm x 7.4mm C-CLIP EMI
Cad File No. UC27221C	Part No. E56xxXxxxxx	Dwg. No. UC3E2722	Rev. C