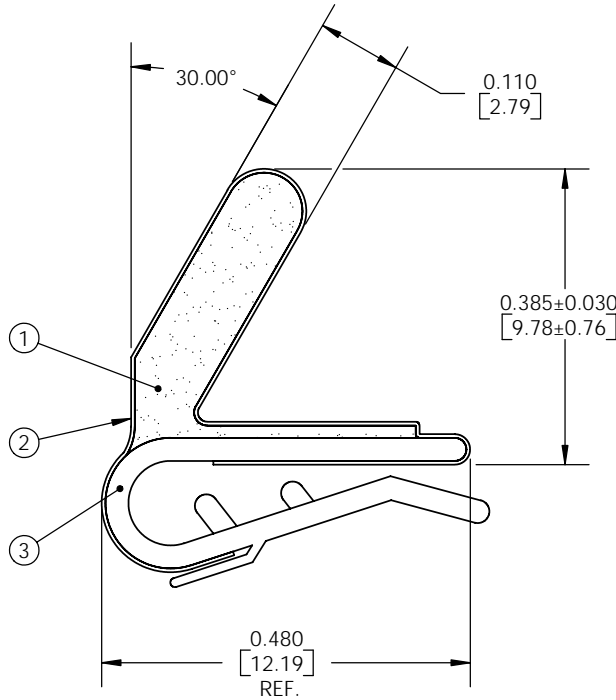
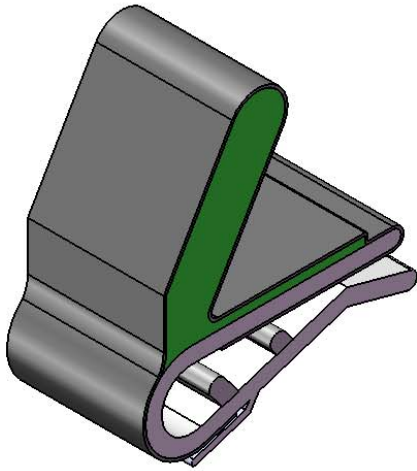


Level		Date	By
○	RELEASE	12/23/98	EL
Ⓐ			
Ⓑ	ECO 2096	12/23/98	EL
Ⓒ	ADDED P/N	3/11/99	EL
Ⓓ	REV PER ECO 2056	10/13/99	EL
Ⓔ	UPDATE SHEET FORMAT	2/26/09	BEP

ROCHESTER DIVISION PRODUCT PRINT

The information disclosed in this drawing is confidential and the property of Schlegel Electronic Materials, INC. The use, disclosure, or reproduction of this information and related know-how is prohibited without written permission from Schlegel Electronic Materials, INC.



SCALE 1:1



TOLERANCES

- Profile thickness: ± 0.015 " (0.38mm)
- Profile width: ± 0.030 " (0.76mm)
- Length: 1.00"-6.00" = ± 0.030 " (0.76mm)
- 6.00"-12.00" = ± 0.040 " (1.0mm)
- Hole diameter: .062"-.500" = ± 0.010 " (0.25mm)
- .501"-1.00" = ± 0.015 " (0.38mm)
- Die cut edge to feature : .062"-.500" = ± 0.015 " (0.38mm)
- .501"-1.00" = ± 0.030 " (0.76mm)

CURRENT CONFIGURATIONS	
PROFILE	DESCRIPTION
E5513	HR FOAM, NiCu C70 FABRIC
E5519	HR FOAM, Ag C2 FABRIC
E5553	BR FR FOAM, NiCu C70 FABRIC
E5554	BR FR FOAM, NiCu C12 FABRIC
E5559	BR FR FOAM, Ag C2 FABRIC
NOTE: Other configurations may be available at special minimum order quantities.	

PDR NO.:			
QUOTE NO.:	③	SEE B.O.M.	480 CLIP PC200840
CUSTOMER NAME:	②	SEE B.O.M.	CONDUCTIVE FABRIC
CUST DWG NO.:	①	SEE B.O.M.	URETHANE FOAM
DATE	12/23/1998		
SIZE	A		
SHEET 1 OF 1		Item No.	Material Description
SCALE:	4:1	Approved By	Drawn By EJL
Title		9.8mm x 12.2mm C-FOLD/CLIP EMI	
Cad File No.	UP16001E	Part No.	E55xxXxxxxx
Dwg. No.	UP3E1600	Rev.	E