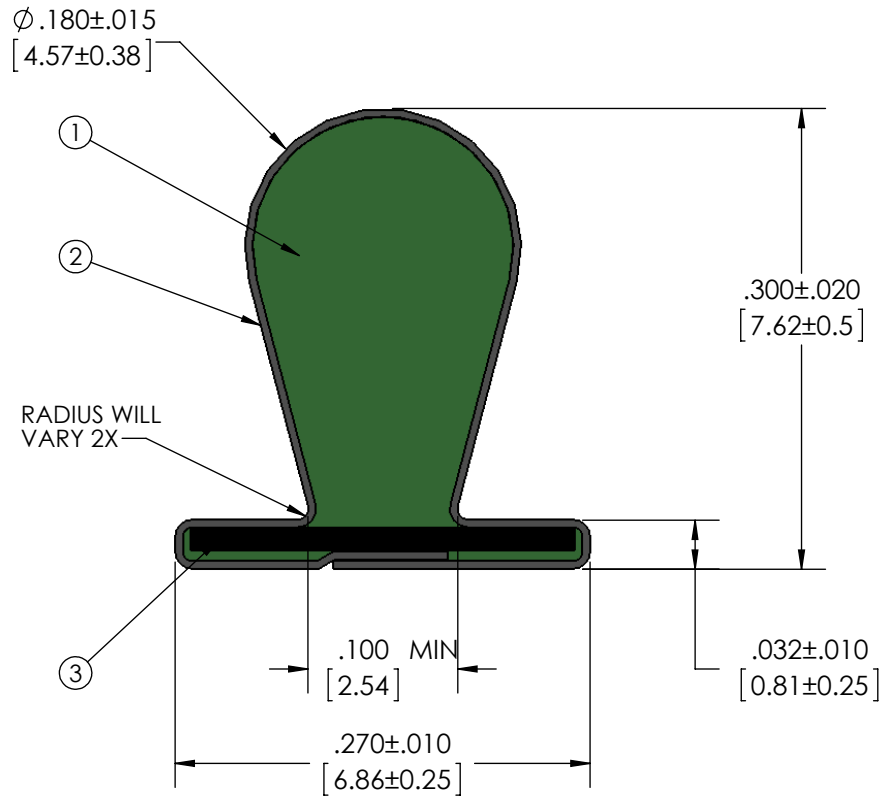
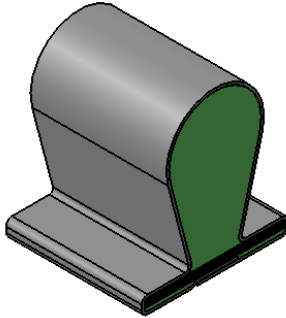


Level		Date	By
(F)	REV TO SOLIDWORKS	8/3/11	LWD
(G)			
(H)			
(I)			

ROCHESTER DIVISION PRODUCT PRINT

The information disclosed in this drawing is confidential and the property of Schlegel Electronic Materials, INC. The use, disclosure, or reproduction of this information and related know-how is prohibited without written permission from Schlegel Electronic Materials, INC.

- NOTES:
 1) REFERENCE DIMENSIONS (REF) HAVE NO TOLERANCE AND ARE FOR INFORMATIVE PURPOSES ONLY.
 2) FOR ALL MISSING DIMENSIONS 3D CAD FILES SHOULD BE USED.
 3) UNLESS OTHERWISE SPECIFIED INTERPRET TOLERANCES ACCORDING TO ISO 2768C.



TOLERANCES
 Profile thickness: ±.015" (0.38mm)
 Profile width: ±.020" (0.51mm)



SCALE 1:1

DIMS: MILLIMETERS <input checked="" type="checkbox"/> INCHES <input checked="" type="checkbox"/>		(4)		
PDR NO.:		(3)	SEE B.O.M.	.015 X .250 PLASTIC INSERT
CUSTOMER NAME:		(2)	SEE B.O.M.	CONDUCTIVE FABRIC
CUST DWG NO.:		(1)	SEE B.O.M.	URETHANE FOAM
SIZE A	Date 8/3/2011	SHEET 1 OF 2		Material Description
SCALE: 8:1	Approved By	Item No.	RM Number	Title 270 X 300 T-SLOT EMI SEAL
Cad File No. UP3E0282		Part No. E53xxXxxxxx	Dwg. No. up3e0282	Rev. F

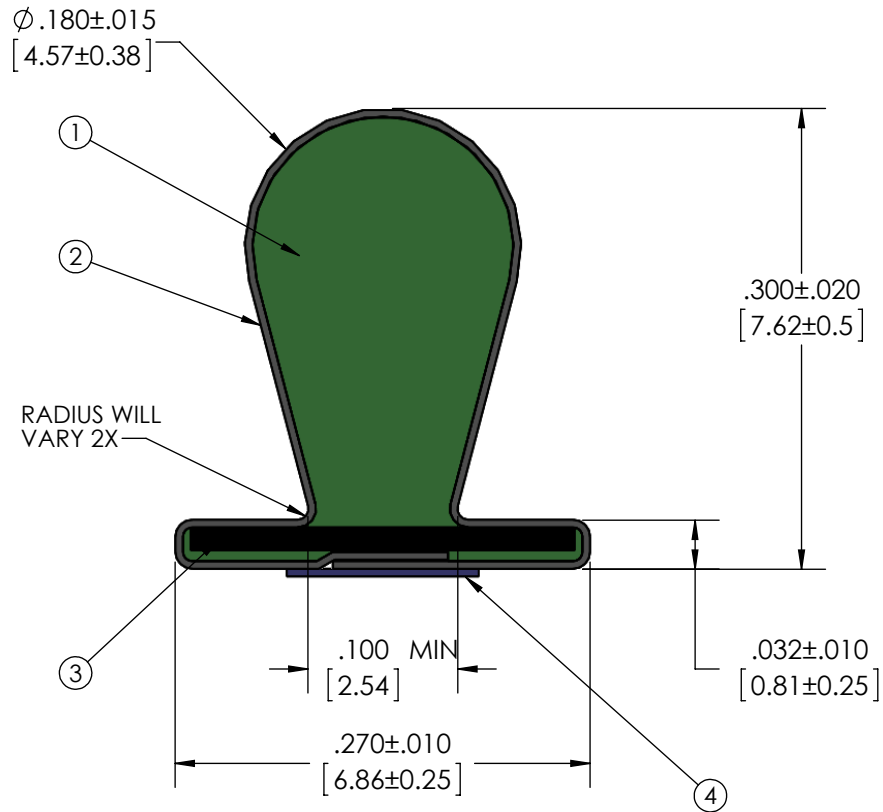
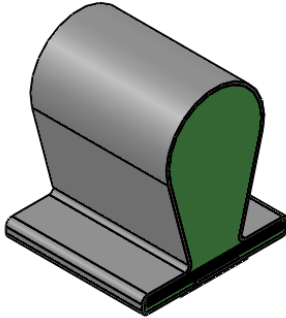
Level		Date	By
F	REV TO SOLIDWORKS	8/3/11	LWD
G			
H			
I			

ROCHESTER DIVISION PRODUCT PRINT

The information disclosed in this drawing is confidential and the property of Schlegel Electronic Materials, INC. The use, disclosure, or reproduction of this information and related know-how is prohibited without written permission from Schlegel Electronic Materials, INC.

NOTES:

- 1) REFERENCE DIMENSIONS (REF) HAVE NO TOLERANCE AND ARE FOR INFORMATIVE PURPOSES ONLY.
- 2) FOR ALL MISSING DIMENSIONS 3D CAD FILES SHOULD BE USED.
- 3) UNLESS OTHERWISE SPECIFIED INTERPRET TOLERANCES ACCORDING TO ISO 2768C.



TOLERANCES

Profile thickness: $\pm .015$ " (0.38mm)
 Profile width: $\pm .020$ " (0.51mm)



SCALE 1:1

DIMS: MILLIMETERS <input checked="" type="checkbox"/> INCHES <input checked="" type="checkbox"/>		④	SEE B.O.M.	3M 950 ADHESIVE .125" WIDE
PDR NO.:		③	SEE B.O.M.	.015 X .250 PLASTIC INSERT
CUSTOMER NAME:		②	SEE B.O.M.	CONDUCTIVE FABRIC
CUST DWG NO.:		①	SEE B.O.M.	URETHANE FOAM
SIZE A	Date 8/3/2011	Item No.	RM Number	Material Description
SHEET 2 OF 2				
SCALE: 8:1	Approved By	Drawn By LWD	Title 270 X 300 T-SLOT EMI SEAL	
Cad File No. UP3E0282	Part No. E53xxXxxxxx	Dwg. No. up3e0282	Rev. F	