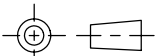
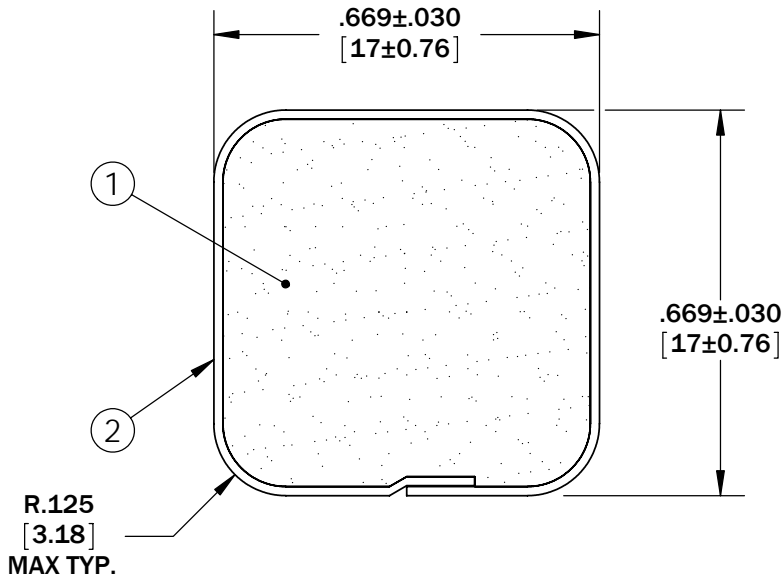
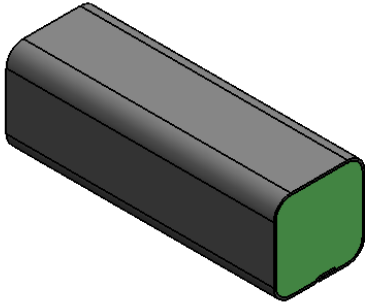


Level		Date	By
(A)	REV PER ECO 2056	3/23/99	EL
(B)	REV SEAM LOCATION	6/22/99	EL
(C)	UPDATE SHEET FORMAT	6/17/09	BEP
(D)			

ROCHESTER DIVISION PRODUCT PRINT

The information disclosed in this drawing is confidential and the property of Schlegel Electronic Materials, INC. The use, disclosure, or reproduction of this information and related know-how is prohibited without written permission from Schlegel Electronic Materials, INC.



TOLERANCES

Profile thickness:  $\pm 0.030$ " (0.76mm)  
 Profile width:  $\pm 0.030$ " (0.76mm)



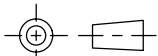
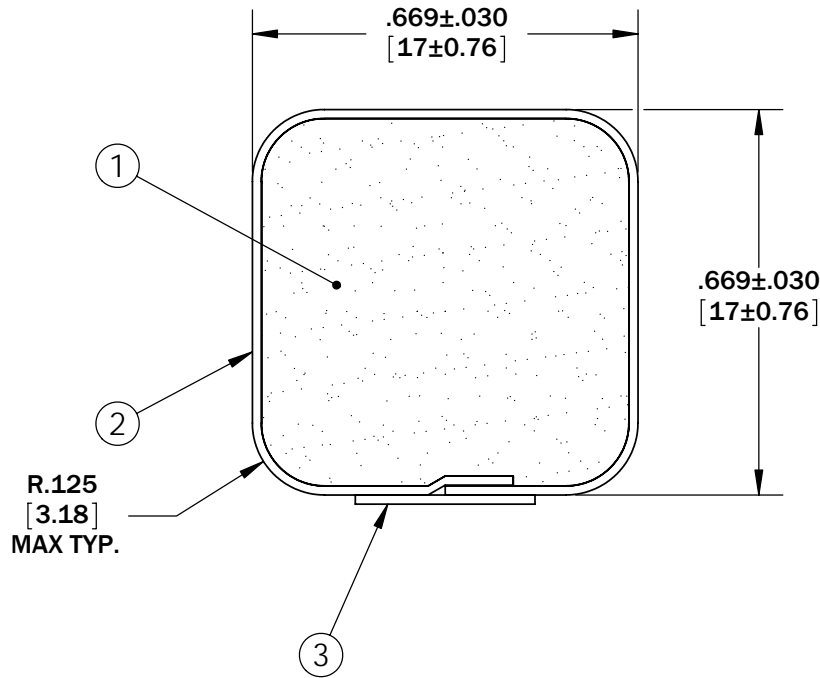
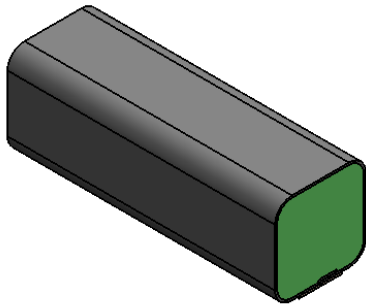
SCALE 1:1

PDR NO.:	(4)		
QUOTE NO.:	(3)		
CUSTOMER NAME:	(2)	SEE B.O.M.	CONDUCTIVE FABRIC
CUST DWG NO.:	(1)	SEE B.O.M.	URETHANE FOAM
SIZE A	Date	11/9/1993	
SHEET 1 OF 2		Item No.	Material Description
SCALE: 3:1	Approved By	Drawn By EJL	Title 17mm x 17mm EMI
Cad File No. UP04921C	Part No. E49	Dwg. No. UP3E0492	Rev. C

Level		Date	By
(A)	REV PER ECO 2056	3/23/99	EL
(B)	REV SEAM LOCATION	6/22/99	EL
(C)	UPDATE SHEET FORMAT	6/17/09	BEP
(D)			

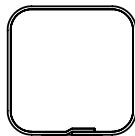
ROCHESTER DIVISION PRODUCT PRINT

The information disclosed in this drawing is confidential and the property of Schlegel Electronic Materials, INC. The use, disclosure, or reproduction of this information and related know-how is prohibited without written permission from Schlegel Electronic Materials, INC.



TOLERANCES

Profile thickness:  $\pm .030$ " (0.76mm)  
 Profile width:  $\pm .030$ " (0.76mm)



SCALE 1:1

PDR NO.:	(4)		
QUOTE NO.:	(3)	SEE B.O.M.	PSA .313" WIDE (UNLESS OTHERWISE SPECIFIED)
CUSTOMER NAME:	(2)	SEE B.O.M.	CONDUCTIVE FABRIC
CUST DWG NO.:	(1)	SEE B.O.M.	URETHANE FOAM
SIZE A	Date	11/9/1993	
SHEET 2 OF 2		Item No.	Material Description
SCALE: 3:1	Approved By	Drawn By: EJL	Title: 17mm x 17mm EMI
Cad File No. UP04921C	Part No. E49	Dwg. No. UP3E0492	Rev. C