

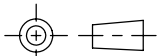
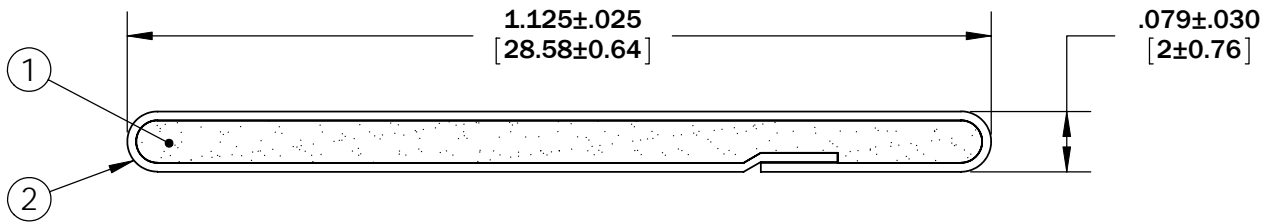
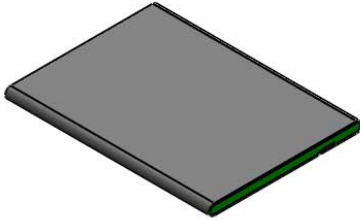


Revisions

Level		Date	By
(A)	REV TO PRO E	3/17/99	EL
(B)	REV TYPO ON TOL	5/27/99	EL
(C)	UPDATE SHEET FORMAT	6/25/09	BEP
(D)			

ROCHESTER DIVISION PRODUCT PRINT

The information disclosed in this drawing is confidential and the property of Schlegel Electronic Materials, INC. The use, disclosure, or reproduction of this information and related know-how is prohibited without written permission from Schlegel Electronic Materials, INC.



TOLERANCES

Profile thickness: $\pm .030$ " (0.76mm)
 Profile width: $\pm .025$ " (0.63mm)



SCALE 1:1

PDR NO.:	(4)		
QUOTE NO.:	(3)		
CUSTOMER NAME:	(2)	SEE B.O.M.	CONDUCTIVE FABRIC
CUST DWG NO.:	(1)	SEE B.O.M.	URETHANE FOAM
SIZE A	Date	12/14/1993	
SHEET 1 OF 2		Item No.	Material Description
SCALE: 4:1	Approved By	Drawn By EJL	Title 2mm x 28.6mm EMI
Cad File No. UP07871C	Part No. E09xxXxxxxx	Dwg. No. UP3E0787	Rev. C

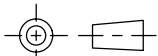
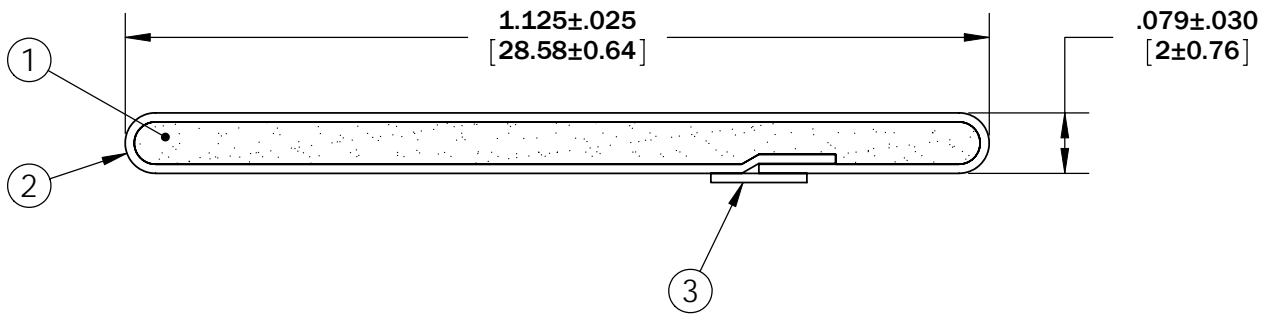
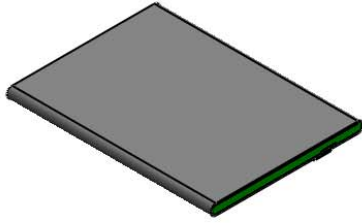


Revisions

Level		Date	By
(A)	REV TO PRO E	3/17/99	EL
(B)	REV TYPO ON TOL	5/27/99	EL
(C)	UPDATE SHEET FORMAT	6/25/09	BEP
(D)			

ROCHESTER DIVISION PRODUCT PRINT

The information disclosed in this drawing is confidential and the property of Schlegel Electronic Materials, INC. The use, disclosure, or reproduction of this information and related know-how is prohibited without written permission from Schlegel Electronic Materials, INC.



TOLERANCES

Profile thickness: $\pm .030$ " (0.76mm)
 Profile width: $\pm .025$ " (0.63mm)



SCALE 1:1

PDR NO.:	(4)		
QUOTE NO.:	(3)	SEE B.O.M.	PSA .125" WIDE (UNLESS OTHERWISE SPECIFIED)
CUSTOMER NAME:	(2)	SEE B.O.M.	CONDUCTIVE FABRIC
CUST DWG NO.:	(1)	SEE B.O.M.	URETHANE FOAM
SIZE A	Date	12/14/1993	
SHEET 2 OF 2		Item No.	Material Description
SCALE: 4:1	Approved By	Drawn By: EJL	Title: 2mm x 28.6mm EMI
Cad File No. UP07871C	Part No. E09xxTxxxxx	Dwg. No. UP3E0787	Rev. C