

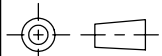
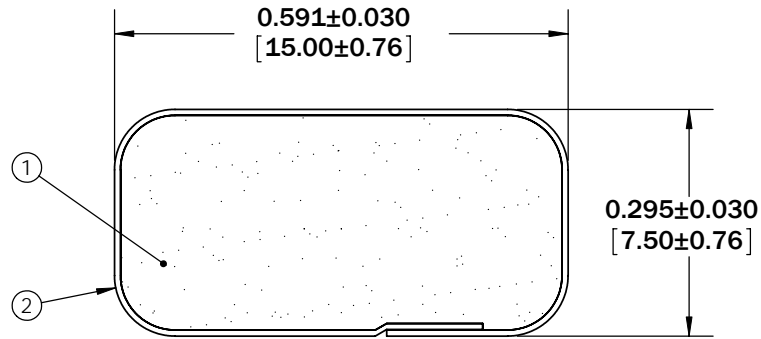
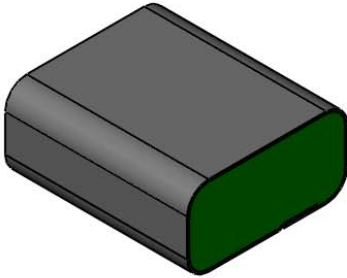


Revisions

Level		Date	By
○	RELEASE	11/30/98	EL
Ⓐ	REV PER ECO 2056	11/30/98	EL
Ⓑ	UPDATE SHEET FORMAT	3/2/09	BEP
Ⓒ			

ROCHESTER DIVISION PRODUCT PRINT

The information disclosed in this drawing is confidential and the property of Schlegel Electronic Materials, INC. The use, disclosure, or reproduction of this information and related know-how is prohibited without written permission from Schlegel Electronic Materials, INC.



TOLERANCES  
 Profile thickness:  $\pm 0.030$ " (0.76mm)  
 Profile width:  $\pm 0.030$ " (0.76mm)



SCALE 1:1

PDR NO.:			
QUOTE NO.:	③		
CUSTOMER NAME:	②	SEE B.O.M.	CONDUCTIVE FABRIC
CUST DWG NO.:	①	SEE B.O.M.	URETHANE FOAM
SIZE A	Date 11/30/1998	Item No.	RM Number
SHEET 1 OF 3		Material Description	
SCALE: 4:1	Approved By	Drawn By EJL	Title 7.5mm x 15mm EMI
Cad File No. UC06201B	Part No. E05xxXxxxxx	Dwg. No. UC3E0620	Rev. B

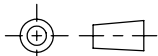
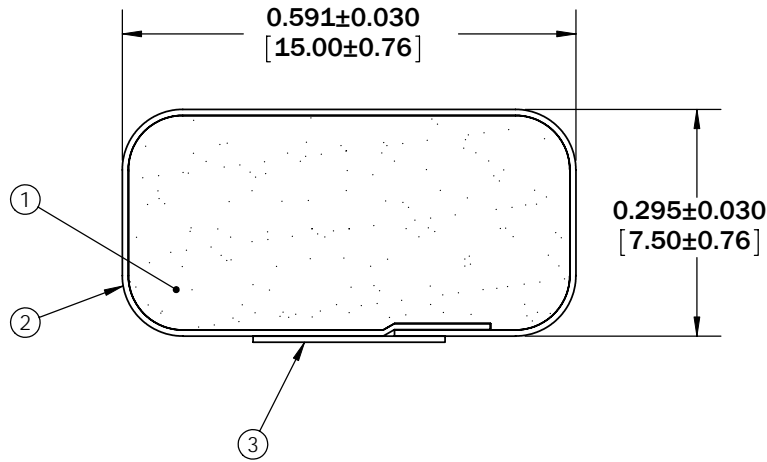
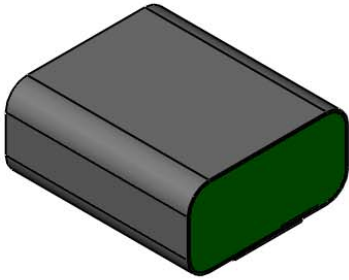


Revisions

Level		Date	By
○	RELEASE	11/30/98	EL
Ⓐ	REV PER ECO 2056	11/30/98	EL
Ⓑ	UPDATE SHEET FORMAT	3/2/09	BEP
Ⓒ			

ROCHESTER DIVISION PRODUCT PRINT

The information disclosed in this drawing is confidential and the property of Schlegel Electronic Materials, INC. The use, disclosure, or reproduction of this information and related know-how is prohibited without written permission from Schlegel Electronic Materials, INC.



**TOLERANCES**  
 Profile thickness:  $\pm 0.030$ " (0.76mm)  
 Profile width:  $\pm 0.030$ " (0.76mm)



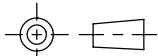
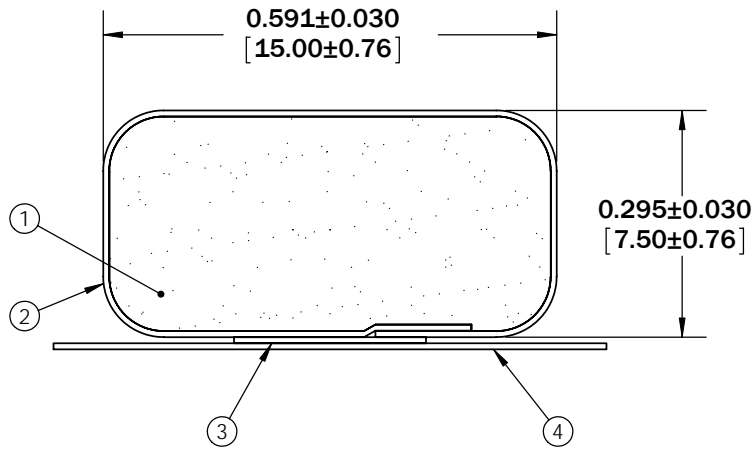
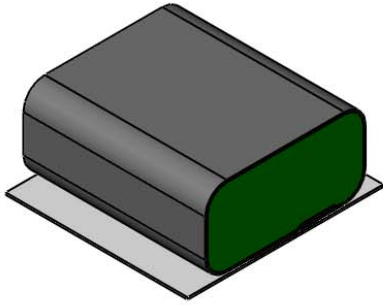
SCALE 1:1

PDR NO.:			
QUOTE NO.:	③	SEE B.O.M.	PSA .250" WIDE (UNLESS OTHERWISE SPECIFIED)
CUSTOMER NAME:	②	SEE B.O.M.	CONDUCTIVE FABRIC
CUST DWG NO.:	①	SEE B.O.M.	URETHANE FOAM
SIZE <b>A</b>	Date 11/30/1998	Item No.	Material Description
SHEET 2 OF 3		RM Number	
SCALE: 4:1	Approved By	Drawn By EJL	Title 7.5mm x 15mm EMI
Cad File No. UC06201B	Part No. E05xxTxxxxx	Dwg. No. UC3E0620	Rev. B

Revisions			
Level		Date	By
○	RELEASE	11/30/98	EL
Ⓐ	REV PER ECO 2056	11/30/98	EL
Ⓑ	UPDATE SHEET FORMAT	3/2/09	BEP
Ⓒ			

ROCHESTER DIVISION PRODUCT PRINT

The information disclosed in this drawing is confidential and the property of Schlegel Electronic Materials, INC. The use, disclosure, or reproduction of this information and related know-how is prohibited without written permission from Schlegel Electronic Materials, INC.



TOLERANCES  
 Profile thickness: ±.030" (0.76mm)  
 Profile width: ±.030" (0.76mm)



SCALE 1:1

PDR NO.:	④	SEE B.O.M.	RELEASE LINER .720" WIDE (UNLESS OTHERWISE SPECIFIED)
QUOTE NO.:	③	SEE B.O.M.	PSA .250" WIDE (UNLESS OTHERWISE SPECIFIED)
CUSTOMER NAME:	②	SEE B.O.M.	CONDUCTIVE FABRIC
CUST DWG NO.:	①	SEE B.O.M.	URETHANE FOAM
SIZE <b>A</b>	Date	11/30/1998	
SHEET 3 OF 3		Item No.	Material Description
SCALE: 4:1	Approved By	Drawn By	EJL
Title		7.5mm x 15mm EMI	
Cad File No.	UC06201B	Part No.	E05xxZxxxxx
Dwg. No.	UC3E0620	Rev.	B